

A PROJECT BY :  
**ADARSH**  
GROUP

RERA REG. NO. :  
PR/GJ/AHMEDABAD/AHMEDABAD CITY/AUDA/MAA10274/060622  
Website: [www.gujrerar1.gujarat.gov.in](http://www.gujrerar1.gujarat.gov.in)

CONTACT :  
M.: 79902 16229  
M.: 97271 70104

SCAN FOR E-BROCHURE



schhaindiamond/491 98790 00957  
the print shop | ahmedabad@gmail.com

**ADARSH**  
**DIAMOND**

2 & 3 BHK MODERN LIVING SPACE



# ADARSH DIAMOND

ADARSH DIAMOND Endow your homes with grandeur and

*Diamond in Equal Measure*

**2 & 3 BHK**  
MODERN LIVING SPACE

These world class apartments come along with a range of delightful natures that are sure to turn your life around. With plush interiors and captivating exteriors these exquisite living space will surely leave you mesmerized and ensure a truly exclusive lifestyle.



Welcome to a wholesome lifestyle with  
*An Ethereal Entrance*





# ADARSH DIAMOND

Fresh air for your

## *Meditative Mornings*



ATTRACTIVE  
ENTRANCE



SECURITY  
CABIN



24 HRS.  
CCTV CAMERA



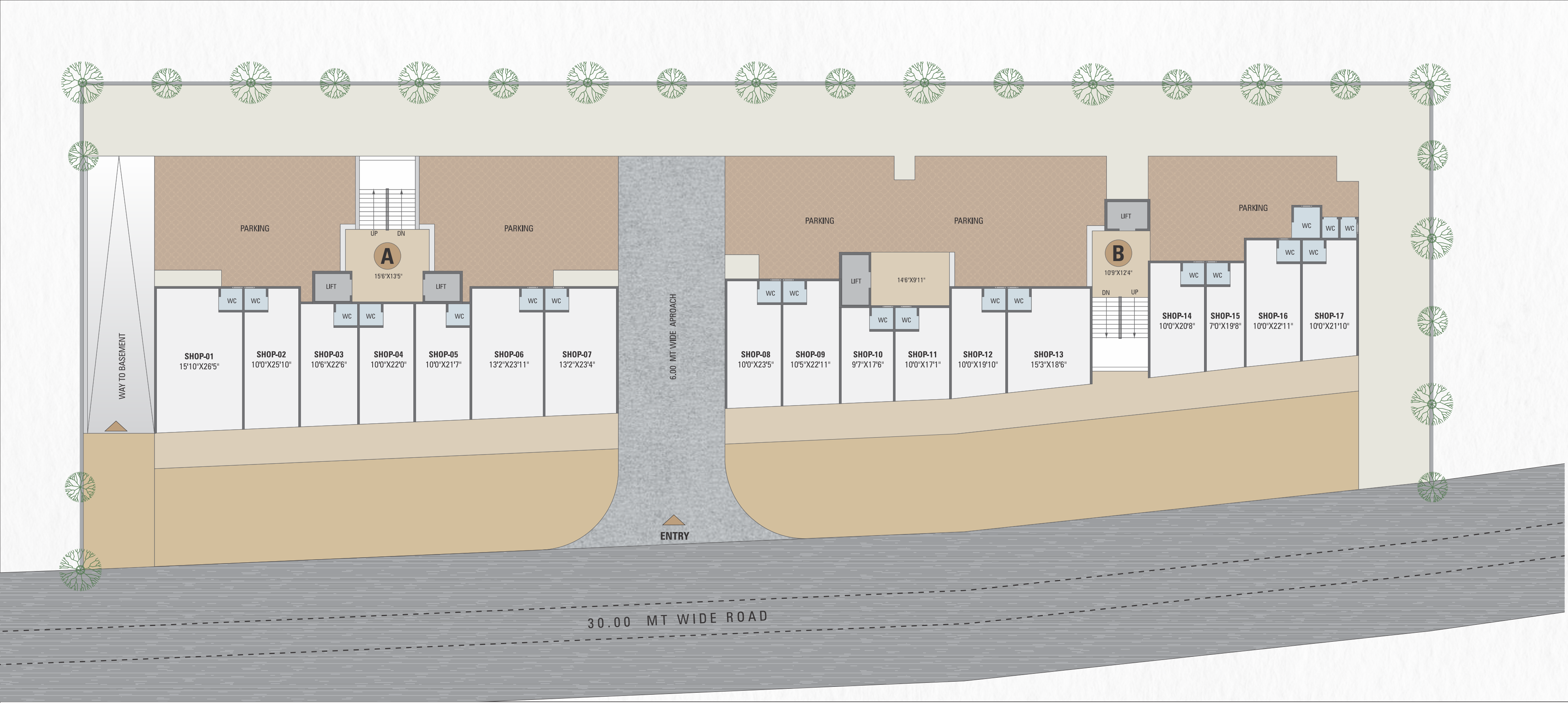
BASEMENT  
PARKING



2 LIFT  
EACH BLOCK



FIRE SAFETY  
SYSTEM





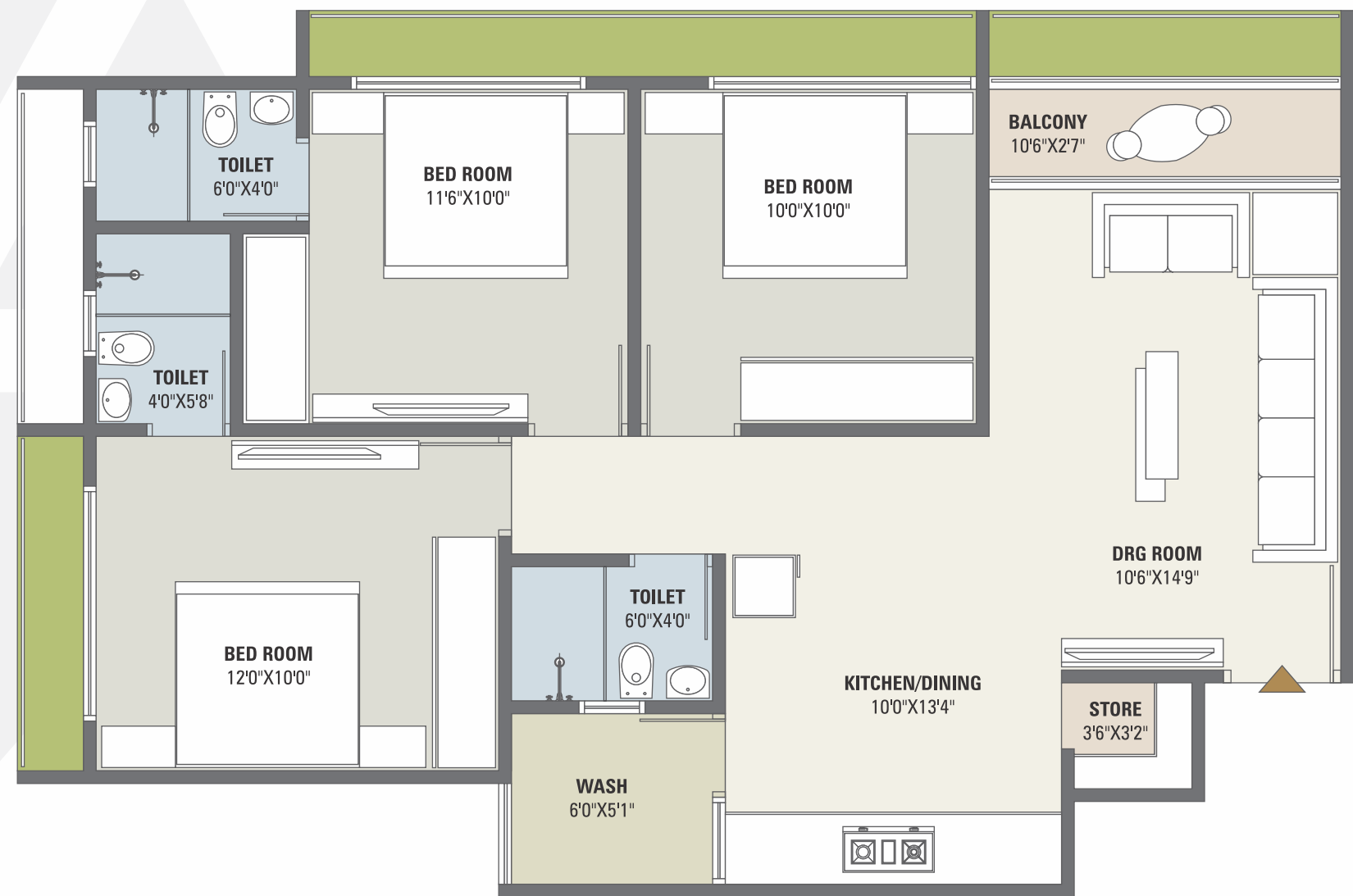
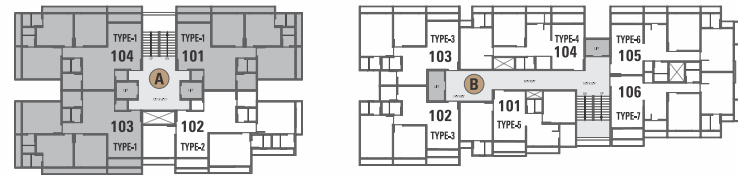
TYPICAL FLOOR  
LAYOUT PLAN

ADARSH  
DIAMOND



3 BHK

TYPE-1 | BLOCK A



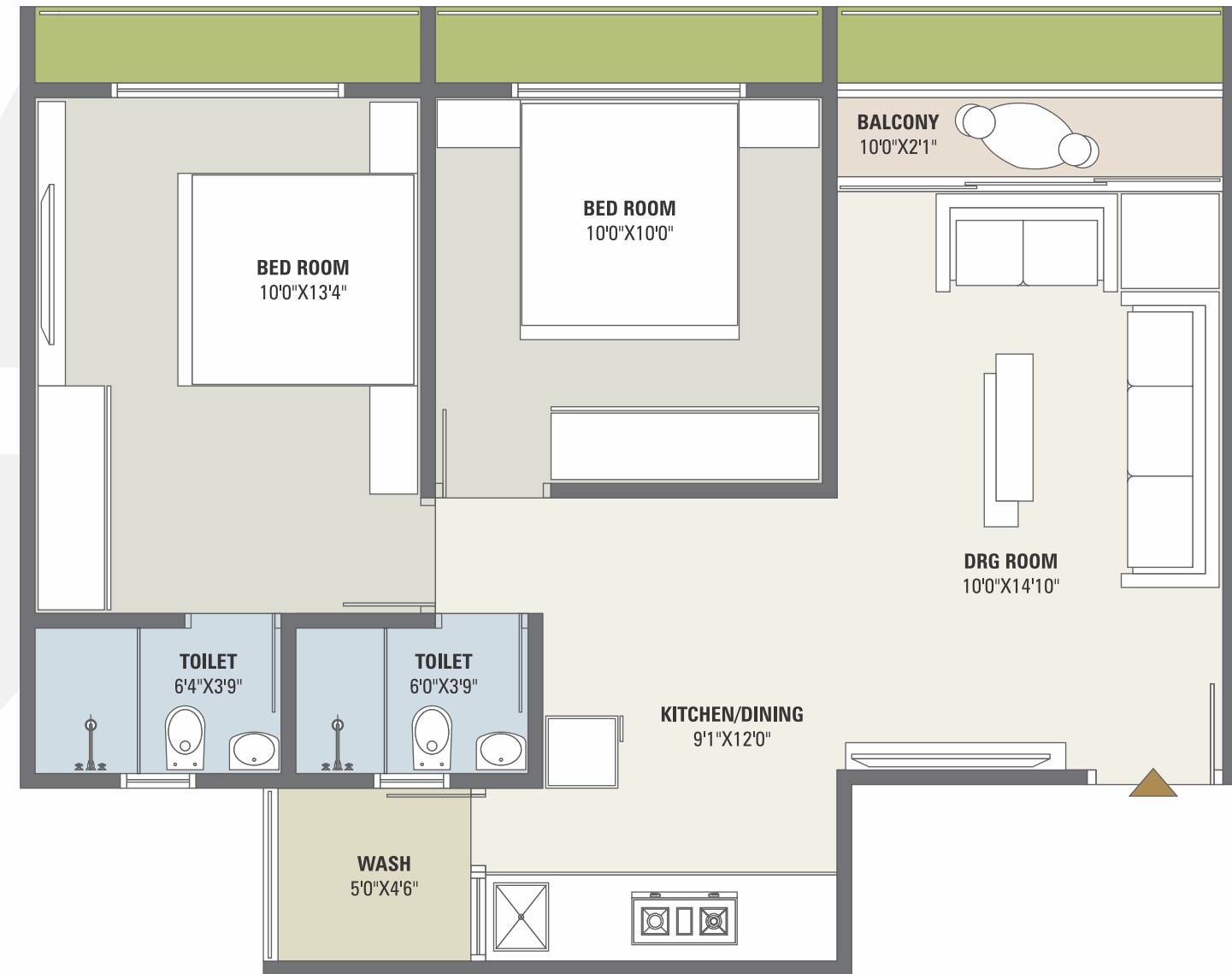
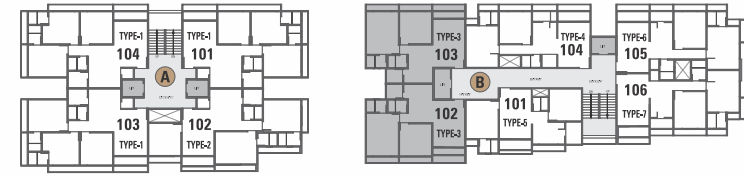
3 BHK

TYPE-2 | BLOCK A



2 BHK

TYPE-3 | BLOCK B



2 BHK

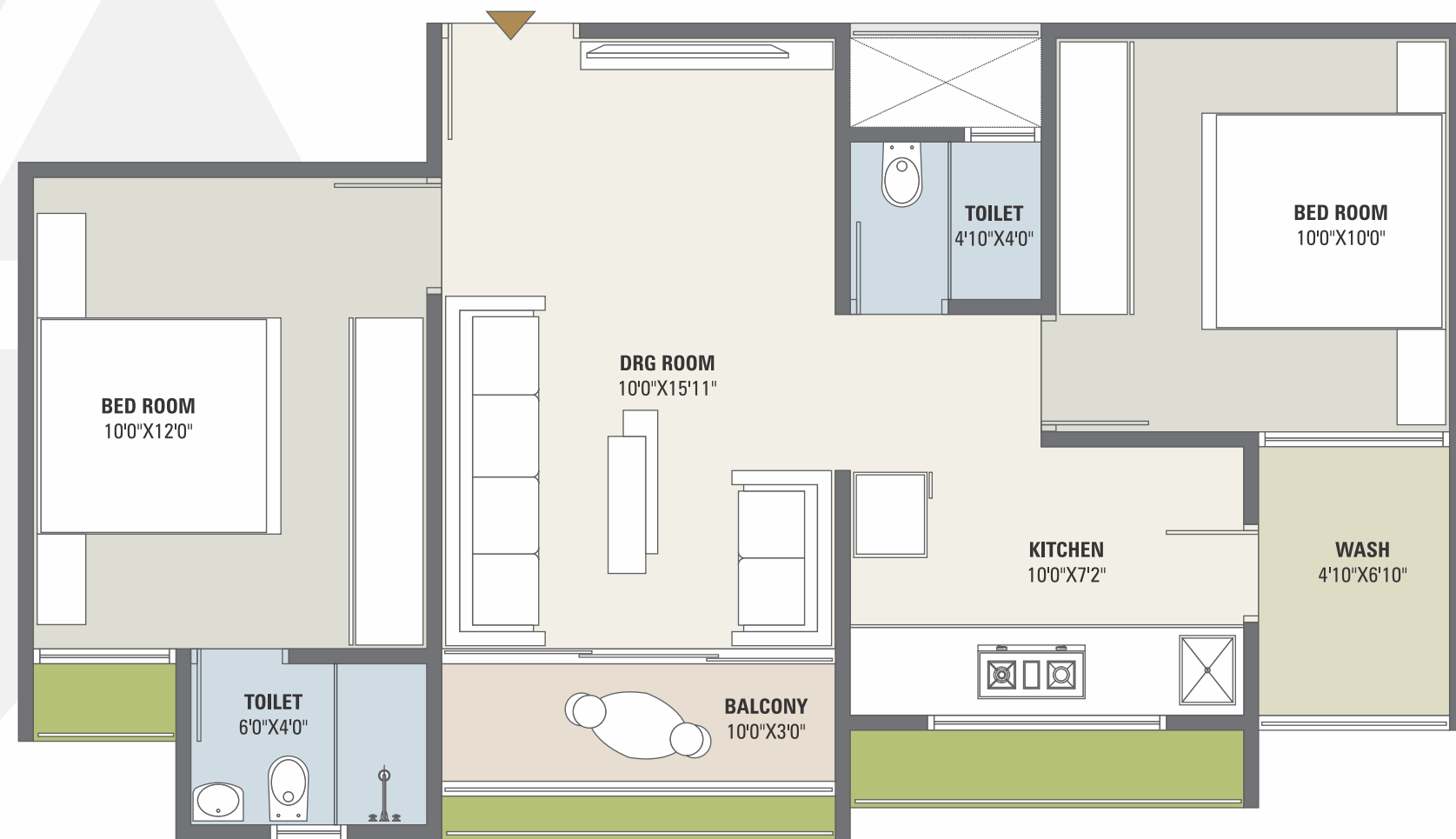
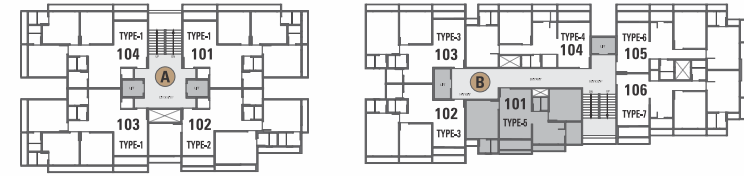
TYPE-4 | BLOCK B





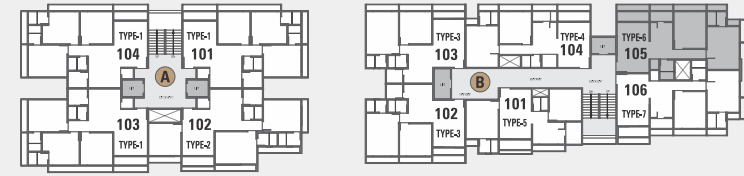
2 BHK

TYPE-5 | BLOCK B



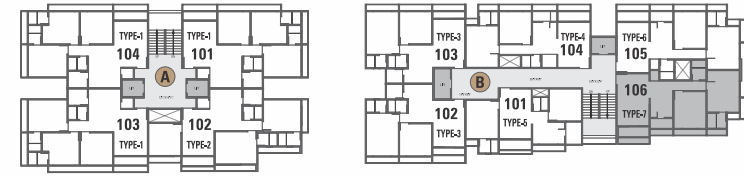
2 BHK

TYPE-6 | BLOCK B



# 2 BHK

TYPE-7 | BLOCK B



# BRAND WE USE

ELEVATOR		(or equivalent)
STEEL		(or equivalent)
CEMENT		(or equivalent)
FLOORING		(or equivalent)
INSIDE PUTTY		(or equivalent)
PLUMBING		(or equivalent)
ALUMINUM WINDOWS		(or equivalent)
BATHROOM FIXTURES		(or equivalent)
ELECTRIC WIRE		(or equivalent)
MODULAR SWITCHES		(or equivalent)
PAINT		(or equivalent)

## SPECIFICATION



### STRUCTURE

Earthquake resistant R.C.C. frame structure as per new by laws.



### FLOORING

Vitrified tiles for entire flooring in all apartments.



### WALL FINISH / ELEVATION

Internal mala plaster with white finish putty.  
Attractive external elevation with double coat sand face plaster.



### DOORS & WINDOWS

Decorative main door & other flush doors with wooden frame.  
All windows in aluminum section with granite frame.



### KITCHEN

Mirror polished granite platform with S.S. sink,  
designer glazed tiles up to lintel level.



### ELECTRIFICATION

Branded ISI modular switches with concealed copper wiring and  
adequate number of points. MCB distribution panel.



### PLUMBING

ISI CPVC and UPVC pipes for water supply,  
PVC & SWR pipes for solid waste and drainage systems.



### TOILET

Designer tiles on floor and walls up to lintel level.  
Branded sanitary & bath fittings.



### TERRACE

Brick-bat concrete with china mosaic for  
heat reflection and thermal insulation.

## PRIME LOCATION

### 0 TO 10 MINUTES FROM

- SOUTH INTERNATIONAL SCHOOL
- DIVINE INTERNATIONAL SCHOOL
- DEVASYA INTERNATIONAL SCHOOL
- VEDANT INTERNATIONAL SCHOOL
- VIP SCHOOL
- SHALBY HOSPITAL
- S.P. RING ROAD
- SWAMINARAYAN TEMPLE
- BAPS TEMPLE
- D-MART
- RAJHANS MULTIPLEX
- RADHA SOAMI SATSANG BEAS

**NOTE :**

- Commencement and timely execution of the project is subject to all necessary approvals from relevant govt. authorities, occurrence of natural calamities or any other external beyond developer's control.
- The dimensions shown in the brochure are approximate.
- The developer reserves the right to change, revise or make any modification, addition, omission or alteration in the scheme as a whole or part thereof, at their sole discretion.
- The brochure is only for illustration & private circulation purpose & is not a legal document or a binding one.
- Government levies like stamp duty, registration charges, legal charges, GST and other additional charges are to be borne by the member.
- Subject to Ahmedabad / Gandhinagar Jurisdiction.
- Payments in favour of **"NAVRATNA BUILDERS"**

# ADARSH DIAMOND

SITE ADDRESS :

### ADARSH DIAMOND

Nr. Raturaj Farm, Bilasiya 100 ft. Road,  
New Hanspura (Bilasiya), Ahmedabad.

SCAN FOR LOCATION



ARCHITECT

SHAPERS360°  
ARCHITECTS & CONSULTANTS

